



SHEEP SHEET

by **Dr. Lyle G. McNeal**, Executive Director,
NSP; Sheep & Wool Specialist;
Copyright 2001©
♻️ printed on recycled paper

Hay

Because of its value to ewes and weaners and in introducing sheep to grain, good quality hay is an important resource during a drought. Stocks of hay should be carefully monitored and regulated during the drought feeding program. Hay is often difficult and expensive to buy during a drought.

The quality of hay depends on its composition and the time of cutting. The earlier the hay is cut and the higher its legume (alfalfa, clover etc.) content, the better it is. Save the best quality hay for the weaners and if the drought persists preserve it for the lactating ewes.

When buying hay, always buy by weight; do not buy on a per-bale basis (if possible) without checking the weights of the bales first. Bale weights can vary by as much as 100%.

Straw

Straw can be used as the roughage part of a ration during a drought but its protein content is low and so is its digestibility; it may need extra treatment before it is used as a livestock feed too. Ammoniated treated straw has shown benefits in reducing the costs of wintering ewes in early pregnancy. Short, fine stemmed straw is more acceptable than coarse clean straw. All of the cereal grains leave straw as a residue following grain harvesting (wheat, barley, oat, rye, etc.).

Oats

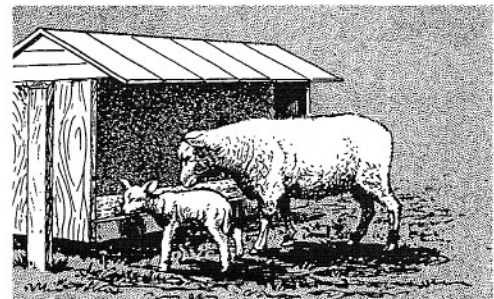
Oats is the safest cereal grain to feed because of its high fiber content, which helps to reduce digestive problems. Oats is usually in strong demand during a drought and the cost per energy unit will generally be higher than that of other grains, like wheat.

Characteristics of Feeds for Sheep

Sheepdex: N-5

If there are limited quantities of oats on the ranch, they should be reserved for weaner lambs as part of their ration and other special purposes; for example, quickly introducing sheep to grain diets.

Oats is, however, lower in protein than most other grains (around 13% crude protein). In the absence of a green harvest, some protein supplementation will be needed if low-protein oats form the major part of the ration for weaners and ewes and lambs.



Wheat

Because its fiber content is very low, wheat should be introduced carefully to avoid digestive problems and even deaths. Experience in previous droughts has removed much of the prejudice against wheat and has shown it to be a valuable drought feed.

Wheat (like other grains) has a high energy content. It is likely to be one of the cheapest sources of energy and the most readily available during a prolonged drought.

The wastage of wheat and barley when fed on the ground seems to be less than the wastage of oats.

Barley

Barley contains more fiber than wheat, and has close to the same energy value. Experience has indicated that it may produce fewer digestive problems than wheat.

However, barley still needs to be fed with the same care as wheat when sheep are being introduced to it.

Sorghum and Corn

These grains, particularly sorghum has about the same energy value as most of the other grains. However, corn generally has one of the highest energy values of all the feed grains.

Peas and Beans

Peas and beans have close to the same energy value as wheat, but have much higher protein contents. These can be used to best advantage by adding small quantities (up to 20% or 30%) to enrich low-protein rations for weaners and lactating ewes.

Pellets, Cubes and Wafers

The value of these feeds as drought rations is largely determined by considering their energy content. Generally the more fiber they contain, the lower their energy content.

Pellets generally have a higher protein content than grains. In most cases, however, *THERE IS NO ADVANTAGE* in paying a premium for pellets with a very high protein content as drought rations unless they are used, like peas or beans, to balance a protein-deficient ration.

Pellets should be introduced carefully to avoid digestive upsets. Pellets may vary in their composition, particularly as the drought progresses, and care should be taken feeding a new batch of pellets to sheep that have been eating pellets for some time.

Be sure to limit feed the pellets to the sheep, especially ewes or rams. The rate of passage for pellets is faster than most roughages, thus, consumption will increase significantly. Economics will obviously dictate a strict feeding regime, if producers must resort to pellet feeding.

Protein, minerals and other supplements

The protein content of a grain will vary with the region, state, locale etc. where it was grown and the season. As a very general rule, the plumper (fatter) the grain kernel, the better the energy value but the lower the protein content.

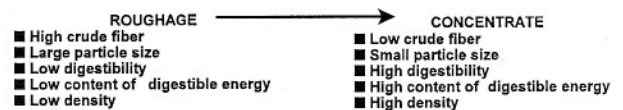
In most cases there is no advantage in paying high prices for extra protein in feeds for drought feeding. Similarly, supplementation of sheep with urea and vitamin A is not likely to be profitable even under drought conditions. Some examples of primary exceptions are as follows:

- Grain that is too low in protein for milking ewes and weaners can be improved by adding a protein supplement, another grain more concentrated in protein like peas and beans.

- Protein supplements such as peas and beans fed to ewes before breeding may improve twinning rates.
- Lambs that are dry-lot fed for sale as fats need a high-protein diet, followed by energy as they near the mature frame and muscle mass.
- Where roughage is of poor quality and is being fed as the only ration, or with grain to weaners, it can be improved by adding a protein supplement such as cottonseed oil meal, soybean oil meal, linseed oil meal, peas, beans, etc.
- Dry sheep fed solely on very low quality roughage such as cereal straw may be helped by a urea-molasses liquid supplement or block, but the response can be variable and some sheep will not consume the supplement at all. More reliable results would come from a supplement of hay or grain.
- Vitamin A can be beneficial to weaned lambs up to one year old if they have not eaten green feed for three to four months. Rams that have been fed grain with no green feed for six months may have improved fertility if fed vitamin a month before breeding.
- Limestone and salt are valuable additives to grain rations, especially for ewes in late pregnancy and early lactation, if stock have been fed a heavy grain diet for a long period.

The Roughage/Concentrate Ratio

- The concept of a ruminant diet as a mixture of two components - 'roughage' and 'concentrate' - in varying proportions, is useful in practice, but it can only be used quantitatively in relation to a particular diet combination such as barley straw and barley, because of the difficulty of defining precisely the terms 'roughage' and 'concentrate'.
- In many senses the two terms signify the two extremes of a continuous transition:



*The Navajo Sheep Project;
Serving People, Preserving Cultures, Inc.
(is a non-profit organization)
PO Box 4454
Logan, UT 84323-4454*