



# SHEEP SHEET

by Dr. Lyle G. McNeal, Executive Director, Sheep & Wool Specialist

Copyright 1998 © ♻️ printed on recycled paper

The testes are pulled firmly into the lower part of the scrotum by encircling its base with the hand pulling down on the testes. The thumb and fingers should be located on the side of the scrotum rather than between the testes to prevent separation of the testes and inaccurate measurement.

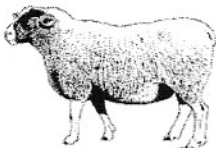
The scrotal tape is formed into a loop and slipped over the scrotum and its contents and pulled up snugly around the **greatest diameter** of the scrotal contents.

When weather is cold, rams retract their testes making it difficult to take proper measurements. Special care should be taken at these times to pull the testes into the bottom and eliminates wrinkles in the scrotum; otherwise, faulty measurements occur. The circumference reading in cm is taken at the index (cursor) formed by the small steel crossbar on the scrotal circumference tape thumb piece.

## INTERPRETATION OF RESULTS:

Scrotal circumference is highly correlated to testis size and semen production in young rams. Ram weight and testis size are also correlated significantly.

Thus, associating scrotal circumference with age can be misleading because of variation in ram size due to different feeding levels, especially in young rams. It is still the best measurement available to measure potential semen-producing capacity at a given time in young rams.



## Use of Scrotal Circumference Tape

---

### Sheepdex R-5

---

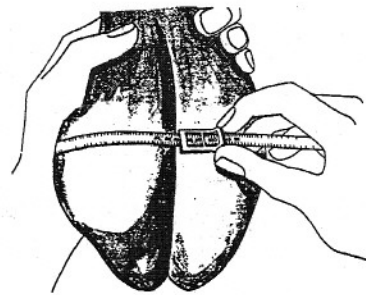
#### SCROTAL CIRCUMFERENCE MEASURED:

##### Ram Lambs:

- **Blackface** - 150 lbs. or heavier, should have a minimum scrotal circumference of 30 cm.
- **Whiteface** - 150 lbs. or heavier, should have a minimum scrotal circumference of 25 cm.

##### Yearling Rams (12 to 18 months) and Older:

- **Blackface** - Should have a minimum scrotal circumference of 33 cm.
- **Whiteface** - Should have a minimum scrotal circumference of 30 cm.



---

For more information write:

The Navajo Sheep Project;  
Serving People, Preserving Cultures®,  
P.O. Box 4454,  
Logan, UT 84323-4454.

(The Navajo Sheep Project is a registered nonprofit Utah corporation.)